



# UNIVERSITY OF ARKANSAS®

---

J. William Fulbright College of Arts and Sciences  
*Department of Music/Band Division*

Auditions for the Fall, 2025 Wind Ensemble and Wind Symphony will be held Saturday, August 16 and Sunday, August 17 in the Epley Band Building. Any University of Arkansas student, regardless of major, may audition. An audition time sign-up sheet will be available on the band website beginning Monday, August 11.

Percussion auditions will include four brief excerpts for snare, bass drum and cymbals, timpani, and keyboard. There will also be a brief segment of sight reading on snare and marimba (two-mallets). Percussion instruments will be available in practice rooms in the Epley Band Building through the summer, 8:00 am to 5:00 pm. From August 1 to August 17, practice rooms and instruments will be available 7:00 am to 11:00 pm.

Using a 100-point scale, there is a minimum score of 20 needed to qualify for placement in the bands. In the unlikely event that there is an incomplete instrumentation in any of the bands, additional scholarships will not be awarded to students to fill incomplete instrumentations.

As you begin to plan your Fall semester schedule, please note the rehearsal schedule for the Fall concert bands:

*Wind Ensemble (Dr. Knighten)* - MUEN 16901, 26901, 36901, 46901, 48601, 56901  
MWF, 12:55-2:15

*Wind Symphony (Mr. Jones)* - MUEN 14601, 24601, 34601, 44601, 46601, 54601  
MWF, 12:55-2:15

Best wishes with your audition preparation!

Snare

Andante con vigoroso ♩ = 84

Handwritten musical score for Snare drum, featuring six staves of music. The tempo is marked "Andante con vigoroso" with a quarter note equal to 84 beats per minute. The score includes various rhythmic patterns, dynamics (f, pp, mf, f), and articulation marks (accents, slurs, and a crescendo line). The notation is written on a single system of six staves, with the first staff starting in 2/4 time and the subsequent staves showing changes in time signature and key signature.

Staff 1: 2/4 time, key of D major. Starts with a half note D4, followed by eighth notes. Dynamics: *f*.

Staff 2: 2/4 time, key of D major. Starts with a half note D4, followed by eighth notes. Dynamics: *f*.

Staff 3: 2/4 time, key of D major. Starts with a half note D4, followed by eighth notes. Dynamics: *f*.

Staff 4: 2/4 time, key of D major. Starts with a half note D4, followed by eighth notes. Dynamics: *pp*.

Staff 5: 2/4 time, key of D major. Starts with a half note D4, followed by eighth notes. Dynamics: *mf*.

Staff 6: 2/4 time, key of D major. Starts with a half note D4, followed by eighth notes. Dynamics: *f*.

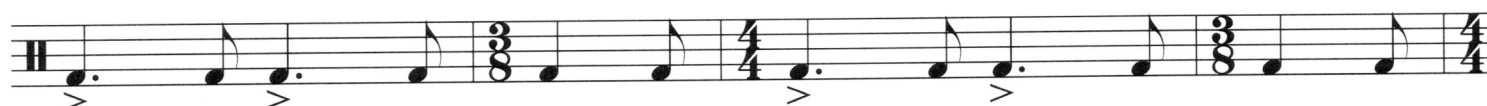
# Bass drum & Crash cymbals etude

♩ = 120

Bass Drum



5



9



To Crash Cymbals . . . 4

17

Cymbals



21

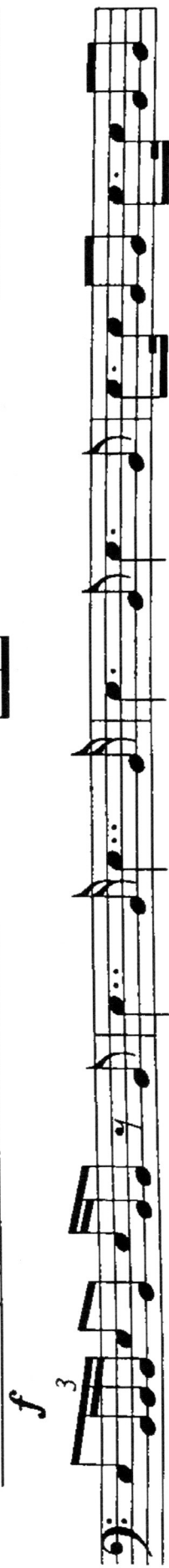


Timpani

$\text{♩} = 90$



*f*



*fp*  $\text{f}$



# Two Mallets

Allegro ♩ = 208

